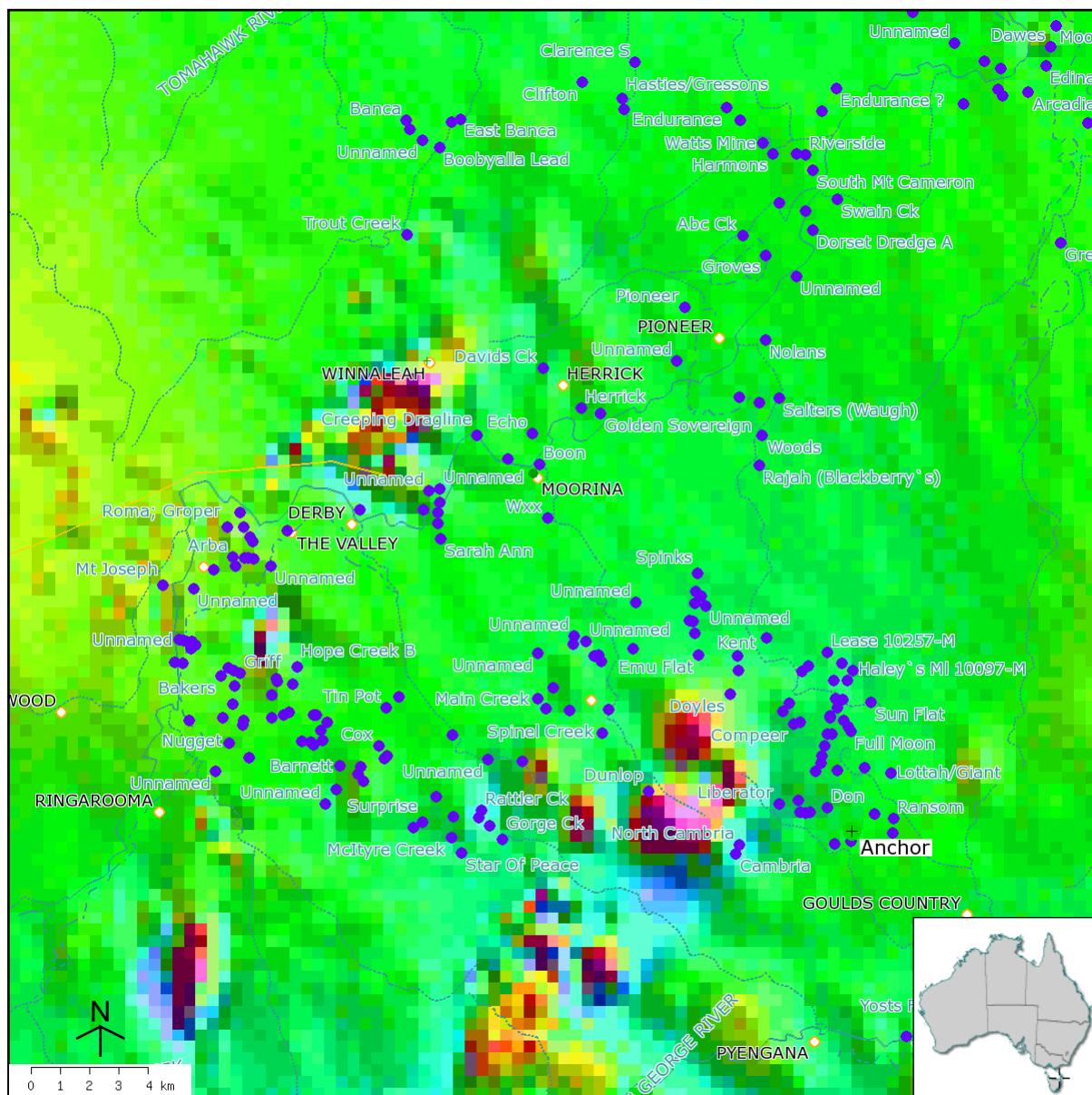


Derby Mt Cameron Magnetics



Projection: Lambert Conformal Conic (Central meridian:134; Standard parallels:-18,-36; Datum:WGS84)

Map centre: 147.883°E, 41.152°S

Powerlines

- 66000 Volts
- 110000 Volts
- 132000 Volts
- 220000 Volts
- 275000 Volts
- 330000 Volts
- 500000 Volts

- Operating mine
- Mineral deposit
- Historic mine
- Mineral Occurrence
- Processing centre
- Port

Power station - Fossil fuel

- Operating
- Proposed/Under construction
- Closed/Not operating

Power station - Renewable energy

- Operating
- Proposed/Under construction
- Closed/Not operating

Coastline

- Canal

Watercourse

- Perennial
- Non-Perennial, Fluctuating

Airport

Population centre

Inland water bodies

- Perennial water bodies
- Non-perennial water bodies
- Other water bodies

Built up areas

© Commonwealth of Australia 2007 Created: 12-Jul-2007 11:30 Ref: <http://www.australianminesatlas.gov.au/>

Disclaimer: This material is provided for general information only and should not be relied upon for any particular purpose. It is made available on the understanding that the Commonwealth is not thereby engaged in rendering professional advice.

Maps and images on this website are not intended for navigation or to precisely locate any particular feature.

Landsat 7 imagery courtesy ACRES (Geoscience Australia).



Australian Government
Department of Industry
Tourism and Resources
Geoscience Australia

